



WADDESDON

Access Specifications



Introduction

At Waddesdon, we welcome all visitors and strive to make everyone's visit as comfortable and enjoyable as possible. This Access Specifications Guide provides detailed information about the house and grounds, including dimensions, floor surfaces and pictures.

If you are looking for a more general overview of accessibility at Waddesdon, please consult our **Access Guide** PDF, which can be found on our website.

Please get in touch if you require any further information about specific access or need advice on planning your visit.

For accessibility enquiries please contact bookings@waddesdon.org.uk



Contents

Blue Badge Car Parking.....	4
Welcome Pavilion.....	4
Welcome Pavilion Lavatories.....	5
Shuttle Bus.....	6
Mobility Bus.....	6
The Manor House.....	7
Manor Restaurant.....	10
Manor Shop and Wine Shop.....	11
Wine Cellars.....	12
Grounds and Gardens.....	14
Parterre.....	15
Aviary	15
Rose Garden	16
Visitor Information Building	17
The Tunnel and Lavatories.....	18
Coffee Bar.....	20
The Power House.....	21
The Stables.....	22
The Treaterie.....	23
The Stables Café.....	24
The Stables Lavatories.....	25
The Woodland Playground.....	27
The Summer House	28
Miss Alice's Drive.....	29

Blue Badge Car Parking

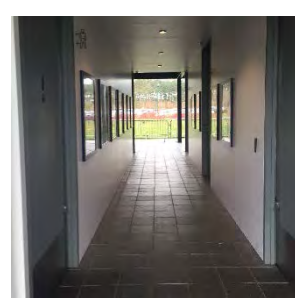
- Open air car park.
- Free for all visitors.
- No advanced booking for blue badge parking - first come, first served basis.

Floor Surface	Tarmac
Dimensions	470cm x 590cm (There is not a 120cm hatched zone around the Blue Badge parking bays).
Parent and Child parking	Yes – clearly signposted
Taxi Parking	Yes



Welcome Pavilion

Floor Surface	Tarmac
Level Access	Yes. Step free access throughout facilities. The route from the car park to the welcome counters is accessible to a wheelchair user unaided.
Counter height	76cm
Seating	There is bench seating available.



National Trust Recruitment Room

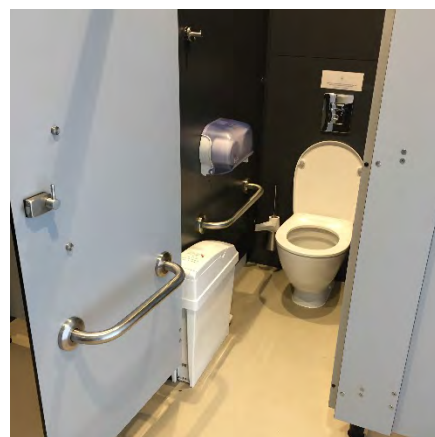
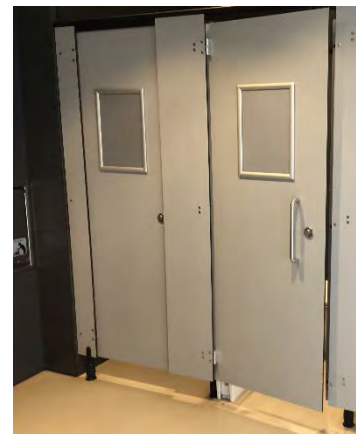
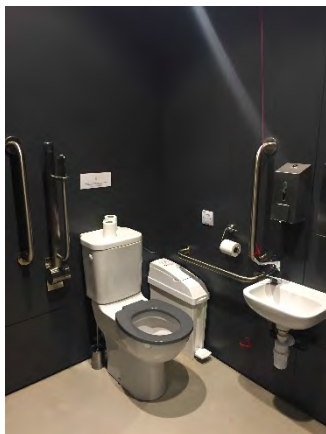
Level Access	Yes
Door	Width – 109cm. Heavy door. Push door.
Seating Available	Yes, with room for a wheelchair to manoeuvre.
Tables	Height - 72cm Tables are not permanently fixed.

Welcome Pavilion Accessible Lavatory

Door	Width – 105cm. Opens outwards. Heavy door. Locked by lever twist.
Level Access	Yes Located at the centre of the Welcome Pavilion.
Key required	No
Room dimensions	195cm x 220cm (Unobstructed minimum turning space 150cm x 150cm).
Lateral transfer space	125cm
Emergency pull cord	Yes
Grab rails	On both sides of the toilet and both sides of wash basin.
Fixtures	Toilet roll holder - 100cm. Wash basin - 74cm. Soap dispenser - 105cm. Paper towel dispenser - 100cm.

Welcome Pavilion Standard Lavatories (Male and Female)

Level Access	Yes Located at the centre of the Welcome Pavilion.
Fixtures	Wash basins, sensor taps. One ambulant toilet with wall-mounted grab rails on both sides.
Baby Changing	In male and female standard toilets. Permanently fixed. Height when extended is 86cm.



Shuttle Bus

Route	Car Park > North Fountain > Stables > Car Park
Ramp	Yes - 76cm. Ramps manually folds out.
Wheelchair space	Up to 2 wheelchairs.
Limited mobility seats	Yes – at the front of the bus.



Mobility Bus

- A purpose-built mobility assistance vehicle is available to transport any visitors with mobility requirements.
- The bus is driven by a staff member, for use ask a staff member at North Fountain.

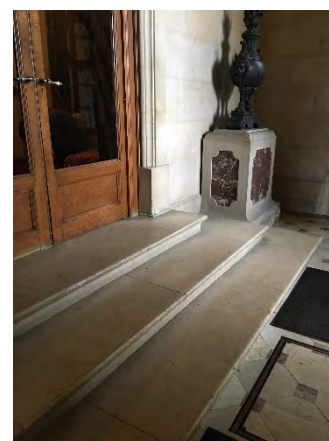
Mobility Bus Route	North Fountain > Manor House/Manor Restaurant
Passenger limit	6 seated passengers 1 wheelchair user
Access	Hydraulic lift on side of bus – 79cm wide. A moveable step to help people getting in.
Fixtures	Handrails on both sides.



The Manor House

Entrance to the Manor

Level Access	Yes Ramped/sloped access with steep gradient. Located to the left of the Manor as you face it, opposite the Coffee Bar and Manor Shop.
Door	Two sets of doors. The main door is permanently open. First door (push) width 120cm (single width). Second door (push) width 160cm (double width).
Steps	There are 5 steps at the main entrance. Step height – 15cm. No handrail.
Lift	The lifts bypass the steps at the main entrance. 2 separate platform lifts, for the separate sets of steps (2 steps, then 3 steps). A member of staff must be notified to use the lift. Lift 1 dimensions – 85cm x 145cm. Lift 2 dimensions – 80cm x 145cm. There are separate entry and exit doors in the lift.
Light levels	Good

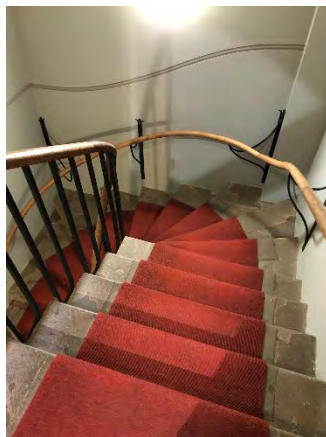
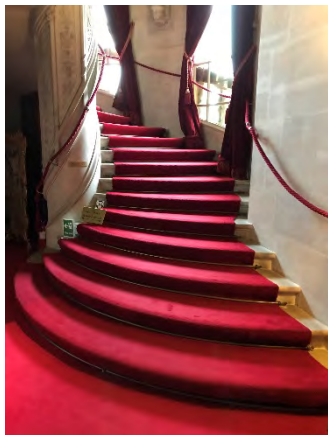


Inside the Manor House

- The Manor House is a self-guided tour

Level Access	Step free access throughout the ground, first and second floors and the Bachelors' Wing. Stairs between the different floors and the Bachelors' Wing.
Floor surfaces	Red carpet Rugs Wooden floorboards
Stairs	<p>There are spiral stairs to access the first floor, second floor and Bachelors' Wing. 42 steps between ground and first floor. 38 steps between the first and second floor. 23 steps from first floor to Bachelors' Wing. Step height 14cm. There are rope handrails (not easy to grip) on both sides throughout stair length, at the recommended height. Handrails do not extend horizontally beyond the first and last steps.</p> <p>There is a different type of stairs leading from the Bachelors' Wing to the Manor Shop and Restaurant corridor. Step height 15cm, with handrail on both sides throughout stair length (easy to grip).</p>
Main Lift	<p>There is a standard lift to take visitors between the ground floor, first floor and Bachelors' Wing. There is a clear level manoeuvring space of 150cm x 150cm in front of the lift. The clear door width is 131cm. Lift dimensions – 132cm x 111cm. A member of staff must be notified to operate the lift. There is not separate entry and exit doors. No mirror to aid reversing out of the lift. The lift is located in a staff only area of the house. On the first floor the lift exits onto a staff corridor and a member of staff will escort you to the visitor area via a door into the Blue Dining Room.</p>
Chair Lift	<p>A chair stair lift is available to provide access to the second floor. Staff must be notified for use of the lift. The chair lift is approx. 4m from the main lift. The visitor must be able to transfer themselves into the chair to use this lift. The lift is located in a staff only area of the house.</p>
Seating	Chair seating is available for visitors throughout the house.
Wheelchairs	<p>There are 4 manual wheelchairs available to borrow in the house. Due to fire evacuation procedure, only 2 wheelchair users are allowed on the first floor at any one time. Visitors may be asked to wait a short time before accessing the lift. Visitors will be accompanied in the lift to the first floor, where they can continue the tour on their own. When finished, they will be accompanied, via the lift, to the first mezzanine (1M) to view the Bachelors' Wing.</p>

	After that, the visitors will be accompanied in the lift again to the ground floor, to exit the house via the main entrance.
Collection information	Large print information guides can be found in each room. Guides are present in the house and can provide information about the house history and collection. Members of staff are throughout the house and can provide assistance.
Light levels	Varies throughout the house – due to conservation reasons, there can be very low lighting in some rooms.
Exiting the house	You can exit the house via the main entrance



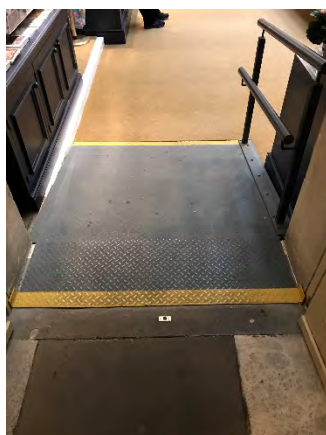
Manor Restaurant

Exterior entrance	Located to the left of the Manor House main entrance. Sloped/ramped access from exterior. It is a permeant ramp with a slight gradient.
Interior Entrance	Located in the corridor that also leads to the Manor Shop. Entrance is not clearly signed. Step free access.
Doors	Exterior door width – 121cm. Heavy door that does not contrast visually with its surroundings. Interior door width – 105cm. Held permanently open.
Interior Access	Step free access. Plenty of room for a wheelchair to manoeuvre.
Floor surface	Half the restaurant is tiled, half the restaurant is carpeted.
Service level	Full table service available.
Tables	No tables are permanently fixed. Standard table height is 70cm.
Chairs	No chairs are permanently fixed.
Menus	Menus are not available in large print, picture form or braille. Handheld and wall menus available. Menus are clearly written in contrasting colours. They serve hot food, cold food and snacks.
Lighting levels	Good
Hearing assistance System	Yes – portable loop.



The Manor Shop

Exterior entrance	Located by the Coffee Bar, left side of the Manor if facing the entrance. Door width 90cm. Single width, pull door. Doors are heavy, not permanently open. Clearly signed. Slightly sloped access.
Interior Entrance	Located in the corridor that also leads from the house or the restaurant. There is a permanent ramp, it is steep. There is a handrail on one side. Door is permanently open.
Access	Step free access within the Manor Shop, but 2 steps level change into the Wine Shop. Plenty of room for a wheelchair to manoeuvre.
Floor surface	Carpet
Tills/Counter	2 tills available. Height is medium height (77cm – 109cm). Clear accessible route to counters.
Lighting levels	Good
Hearing assistance System	Yes – portable loop.



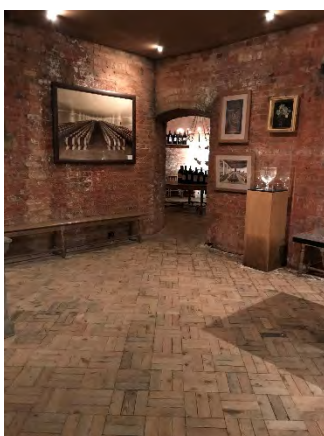
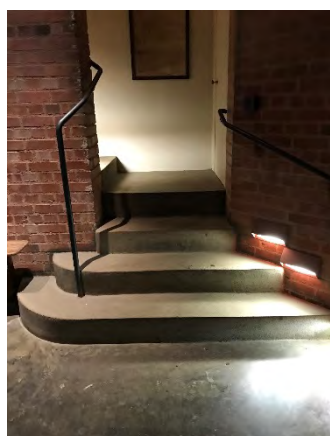
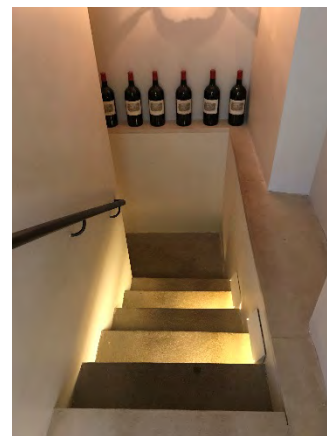
The Wine Shop

Entrance	Access to the Wine Shop is through the Manor Shop. There are no doors.
Access	There is a level change from the Manor Shop into the Wine Shop. There are 2 steps – height 14cm, no handrail. There is a portable ramp that can be used to access the Wine Shop. Please contact a member of staff for use of the portable ramp. Ramp width 73cm. Gradient is slight.
Floor surface	Wooden floorboards.
Tills/Counter	1 till available. Height is medium height (77cm – 109cm). Clear accessible route to counters.
Lighting levels	Good
Hearing assistance System	No



The Wine Cellars

Level Access	No Located to the right of the main entrance of the Manor House. Step free access is through the tunnel and requires a member of staff.
Main Entrance	Stepped access to entrance. 5 steps up, step height is 14cm. No handrail. Door is permanently open, with a member of staff located inside the entrance. Door width 134cm.
Steps down to Cellar	The steps are not clearly marked. The step height is 20cm. Handrails (easy grip) cover the length of the stairs, at recommended height (90cm-100cm). The handrail changes side after a landing.
Accessible Route to Cellar	Requires a member of staff. Goes through the basement of the house – accessed via the tunnel behind the coffee bar. Door into the route – width 140cm. There are a number of doors a staff member will open along the route. Step free access along the route. Entrance into the cellar is a double width door – width 130cm. To guarantee the use of the accessible route to the cellar, please inform Waddesdon in advance that you require a member of staff to assist you.
Inside Access	Step free access throughout the Wine Cellars. There are a number of different rooms.
Seating	Bench and chair seating available.
Floor surface	Stone tiles.
Light levels	Low



Grounds and Gardens

Access	Paths around the Manor House and Gardens are generally level, or easy/slight slopes. Paths leading from the Manor House to the Stables, Summerhouse, Woodland Playground or Alice Drive have steep slopes in places. These can be overcome by using the Shuttle Bus to go from North Fountain to the Stables.
Bollards	Bollards are found at either end of the path leading to the Coffee Bar, Manor Shop and Power House. Width between bollards in grounds – 120cm.
Mobility	Mobility Bus available to escort visitors from North Fountain to the Manor House or Restaurant. Manual wheelchairs are available to borrow at North Fountain and inside the Manor.
Floor surfaces	Tarmac Gravel Woodchip/bark chip Grass
Seating	Bench seating placed around the Grounds/Gardens. Tables and chairs outside the Summerhouse, Stables, Manor Shop and Coffee Bar.
Signage	Clear, directional signage around the grounds. Clear colour contrast and pictograms.



Parterre

Level Access	Step free access throughout. Slight slopes on the paths – two paths lead from the grounds into the Aviary. Shallow step without handrails to access the fountain inside the centre of the Aviary.
Seating	Bench seating available.
Floor surface	Gravel surface.



The Aviary

Access	Located at the rear of the Manor House. Step free access via a long gravel path, with slight gradient. Paths from both sides of the Manor House.
Steps	There are multiple sets of steps to access the lower Parterre, plantings and fountains. No handrail, stone surface.
Floor surfaces	Stone Gravel
Seating	Bench seating



The Rose Garden

Access	Located near the Aviary. Accessed through a gate that opens towards you, width 152cm. Step free access throughout the Rose Garden.
Floor surfaces	Gravel
Seating	Bench seating



Visitor Information Building

Entrance	Door is heavy and double width, but one door is locked. Push doors. Door width 75cm, ask staff to open both doors for width of 150cm. Ramped/sloped access. Ramp is permanent with slight gradient. Clearly signed.
Access	Step free access within the Visitor Information building. Room for a wheelchair to manoeuvre.
Floor surface	Carpet
Counter	Counter height is low – 76cm or lower. Clear accessible route to counters. Counter is staffed, with space to write on.
Seating	There is a waiting area by the counter with chairs. The space is unobstructed. The chairs are not permanently fixed. No armrests.
Visitor Information Available	Maps and information leaflets available from the counter. Larger bags are left here before entering the Manor House. Audio guides for the house tour are available at the counter. Written transcript of the Audio House Tour is available for free of charge upon request.
Lighting levels	Can be low.
Hearing assistance System	No



The Tunnel

Access	Located by the Coffee Bar and side of the Manor. Step free access throughout – slight slope through the tunnel. Gives access to the accessible lavatory, parent and baby room and male and female standard lavatories. Also provides the accessible route to the Wine Cellar.
Floor surfaces	Stone paving



The Tunnel Lavatories

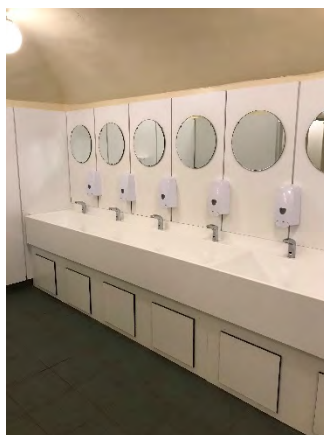
Accessible Lavatory

Door	Width – 92cm. Opens outwards. Light door. Locked by locking handle.
Level Access	Yes Located on the right side of the tunnel.
Key required	No
Room dimensions	150cm x 185cm (Does not have the unobstructed minimum turning space of 150cm x 150cm).
Lateral transfer space	120cm – on the left as you face the toilet.
Emergency pull cord	The emergency alarm is a strip around the bottom edge of the wall – 15cm from the floor.
Flush	Not on the transfer side. Spatula type lever flush.
Grab rails	On both sides of the toilet and both sides of wash basin.
Fixtures	Toilet roll holder - 100cm. Toilet seat height – 43cm. Wash basin - 80cm. Soap dispenser – 95cm. Towel dispenser - 100cm.



Standard Lavatories (Male and Female)

Level Access	Yes Located at the rear of the tunnel.
Grab rails	No ambulant toilet with grab rails available.
Fixtures	Wash basin taps type is sensor.



Parent and Baby Room

Level Access	Yes Located on the right side of the tunnel.
Key required	No
Baby change table	Permanently fixed at 75cm from the floor. Not set against the wall. Not height adjustable. Once extended, the height is 96cm.
Fixtures	Wash basin – height 76cm. Disposal facilities. Chair (no armrests). There is a toilet in the room.
Light levels	Good



Coffee Bar

Access	Step free access – the coffee bar is outside. Room for a wheelchair to manoeuvre. Located to the right of the Manor House as you face it, in front of the Manor Shop.
Floor surface	Tarmac
Counters	The height of the service counter is medium height (77cm – 109cm). There is not a lowered section of the counter.
Service level	Food/drinks are ordered at the service counter. They can be brought to the table by staff. If a customer is unable to access the service counter, a member of staff can provide assistance.
Tables	No tables are permanently fixed. The standard height for tables is 73cm.
Chairs	No chairs are permanently fixed. No chairs have armrests on both sides.
Menus	Menus are not available in large print, picture form or braille. Only wall menus available. Menus are clearly written in contrasting colours. They serve hot and cold meals and snacks.
Hearing assistance System	No



The Power House

Level Access	Yes Ramped/sloped access with steep gradient. Located to the left of the Manor as you face it, opposite the Coffee Bar and Manor Shop.
Door	Pull door, which is double width but with one door locked. The door is heavy. Door width 90cm. Door contrasts visually with its immediate surroundings.
Inside Access	Level access within the Power House.
Seating	There are many chairs inside (not permanently fixed). No armrests.
Hearing assistance system	Yes – the system is a fixed loop.
Light levels	Good



The Stables

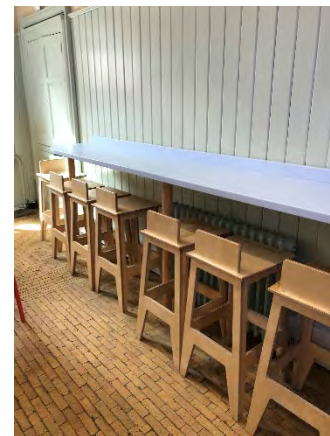
- The Stables is a courtyard located down a hill from the Manor.
- There are surfaced paths between them, but they can be very steep.
- The shuttle bus can be used to get from North Fountain to the Stables.

Shuttle Bus drop off	Located at front of courtyard. There is a bench to use whilst waiting for the bus
Courtyard Access	Step free access into and throughout the courtyard. Doors are permanently open and width is 300cm. Surface is block paving and gravel (in the centre).
Exterior seating	There is a seating area with tables and chairs in the centre of the courtyard. Some are under canopies. There are picnic tables located outside of the courtyard. There is no space for a wheelchair under the picnic tables.
Coach House Access	Step free access. Main doors (double width) open automatically, there is a push pad to open doors. The width of the door opening is 109cm. The door does not contrast visually with the immediate surroundings.



The Stables Treaterie

Doors	Exterior doors (single width) are permanently open and are 120cm wide. There is a doorway (single width, permanently open) between the food counter and seating area, with a slight ridge on the floor.
Access	Step free access throughout. Plenty of room for a wheelchair to manoeuvre.
Floor surface	Small stone tiling.
Counters	The height of the service counter is medium height (77cm – 109cm). There is not a lowered section of the counter.
Tables	Some tables are permanently fixed. Standard table height is 70cm. The difference between the floor and the lowest table is 73cm. The difference between the floor and the highest table is 100cm.
Chairs	Some chairs are permanently fixed. No chairs have armrests on both sides.
Menus	Menus are not available in large print, picture form or braille. Only wall menus available. Menus are clearly written in contrasting colours. They serve dessert foods.
Lighting levels	Good
Hearing assistance System	No



The Stables Café

Entrance Doors	There are two doors to access the Stables Café – one exterior (double width), one interior (single width). The interior door is not permanently open and heavy. The first door (push) width is 120cm and the second door (pull) width is 85cm.
Exit Door	There is a different door to exit the café, by the café counter. The door width (single width, pull) is 120cm. It is heavy.
Access	Step free access throughout. There is room for a wheelchair to manoeuvre.
Floor surface	Tiles
Service type	Full table service is available.
Tables	No tables are permanently fixed. Standard table height is 70cm. The difference between the floor and the lowest table is 70cm.
Chairs	No chairs are permanently fixed. No chairs have armrests.
Menus	Menus are available in large prints. Menus are not available in picture form or braille. Menus are hand held only. Menus are clearly written in contrasting colours. They serve lunches, sandwiches, hot and cold snacks.
Lighting levels	Good
Hearing assistance System	No



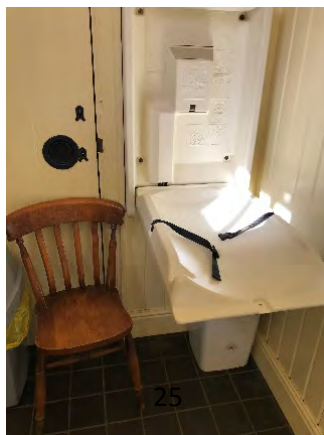
The Stables Accessible Lavatory

Door	Width – 100cm. Opens outwards. Heavy door. Locked by locking handle.
Level Access	Yes Located at back corner of the Stables.
Key required	No
Room dimensions	145cm x 195cm (Unobstructed minimum turning space 150cm x 150cm).
Lateral transfer space	75cm – on the left.
Emergency pull cord	Yes
Flush	On the transfer side. Not a spatula type lever flush.
Grab rails	On both sides of the toilet and both sides of wash basin.
Fixtures	Toilet roll holder - 100cm. Wash basin - 74cm. Soap dispenser. Hand dryer - 100cm.



The Stables Parent and Baby Room

Level Access	Yes Located on the centre right of the courtyard.
Key required	No
Baby change table	Permanently fixed at 75cm from the floor. Not set against the wall. Not height adjustable. Once extended, the height is 105cm.
Fixtures	Wash basin – height 105cm. Disposal facilities. Chair (no armrests). No toilet.
Light levels	Good



The Stables Standard Female Lavatories

Level Access	Yes Located approx. 3m from Café entrance and is next to the accessible lavatory.
Grab rails	No ambulant toilet with grab rails available.
Fixtures	Wash basin tap – twist/turn.
Light level	Good



The Stable Standard Male Lavatories

Level Access	No – there is stepped access up to the toilets. Located outside the courtyard, inside a separate building.
Steps	There are 5 steps. Step height 17cm. Full handrail on both sides – height 90cm-100cm. Easy to grip.
Grab rails	No ambulant toilet with grab rails available.
Fixtures	Wash basin tap – twist/turn.
Light level	Good



The Woodland Playground

- Playground for children up to 14 years old.
- The playground is outdoors.

Level Access	No – there are steps, or ramps/slopes. Located between the Summer House and the Stables.
Ramps/Slopes	There is a ramp/slope, with a slight gradient, to access the Playground from the Stables. (Bypasses the steps) The ramps are permanent. Ramp width – 145cm. Handrails on the left side.
Steps	There are steps to access the Playground from the Stables. 9 steps, not clearly marked. Step height 16cm. Handrail (easy grip) on the right side.
Woodland Playground Paths	There are paths that lead from both access points. They have varying gradients – slight, steep and very steep. Paths have handrails on differing sides throughout.
Floor surface	Paths – wooden boards/boardwalk. Playground – bark chipping.



The Summer House

Doors	Door width is 80cm. Single width.
Access	Ramped/sloped access at entrance and exit. Ramps are permanent and steep. Ramp width 80cm. Step free access within the Summer House. Room for a wheelchair to manoeuvre.
Floor surface	Inside – lino. Outside – gravel.
Counters	The height of the service counter is medium height (77cm – 109cm). There is not a lowered section of the counter.
Service level	Food/drinks are ordered at the service counter. They can be brought to the table by staff. If a customer is unable to access the service counter, a member of staff can provide assistance.
Tables	No tables are permanently fixed. The difference between the floor and the highest table is 70cm. Tables are outside.
Chairs	No chairs are permanently fixed. No chairs have armrests on both sides.
Menus	Menus are not available in large print, picture form or braille. Only wall menus available. Menus are clearly written in contrasting colours. They serve hot and cold meals and snacks.
Lighting levels	Good
Hearing assistance System	No



Miss Alice's Drive

- Miss Alice's Drive is a woodland walk and nature trail.

Route	Summer House >> Stables or Stables >> Summer House
Access	There is step-free access from both sides.
Ground Surface	Uneven surface Varies from tarmac or loose chippings to unsurfaced woodland ground. There are slight slopes along the route. There are some tree roots on the path that could provide an obstacle.

