



WADDES DON

Learning



Pull and Pop-Up Delft Easter Card



What you need:

- Mid Blue Card
- Light Blue Card
- White Card
- Coloured Card for tulips
 - (Pink, red, yellow, green, or you can use the white card and colour your flowers in.)
- Delft designs (provided)
- Tulip stencil (provided)
- Scissors
- Pencil
- Ruler
- Glue
- Ribbon
- Stapler



For further information
call the Education Team

01296 653262
www.waddesdon.org.uk



WADDES DON



WADDES DON



Learning

Method:

1. Cut a rectangle 25cm x 18cm of the mid blue card and fold in half to create a 12.5 x 18cm card. This will act as the base for your card.



2. Cut a 9cm square of the light blue card and stick on the square Delft design of your choice.



For further information
call the Education Team

01296 653262
www.waddesdon.org.uk



WADDES DON

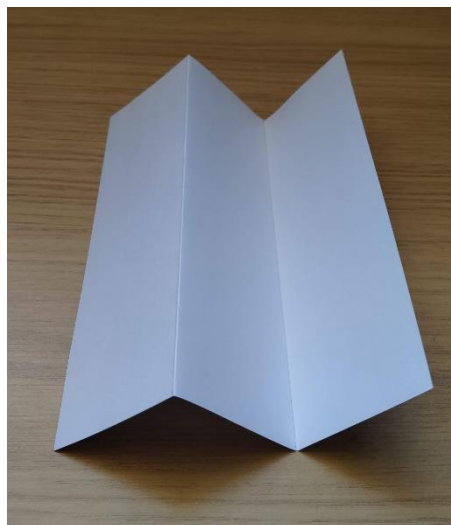


WADDES DON



Learning

3. Cut a 15cm x 17cm rectangle of the white card. Draw lines vertically at 5cm and 10cm before making an accordion fold along the lines. See the image below for help on making an accordion fold.



You should now have the following pieces:



For further information
call the Education Team

01296 653262
www.waddesdon.org.uk



WADDES DON

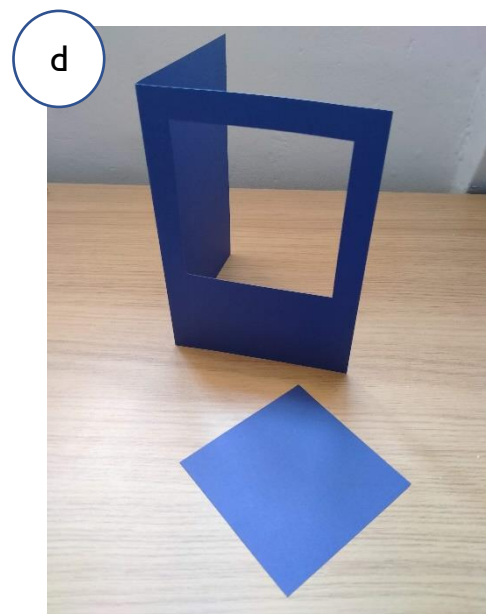
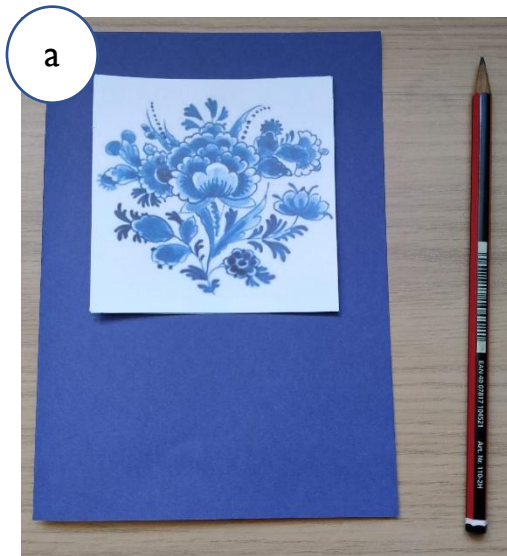


WADDES DON



Learning

4. Place the square with the Delft design onto the front of your card base and mark its location with a pencil. Draw a square which is 0.5cm larger than the square you've just drawn, over your first square. Cut out this larger square to create a window.



For further information
call the Education Team

01296 653262
www.waddesdon.org.uk



WADDES DON



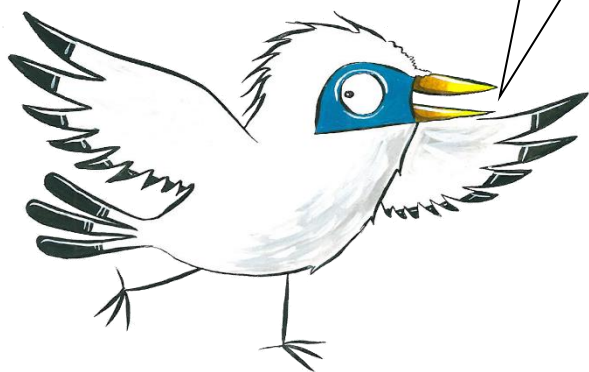
WADDES DON



Learning

5. Decorate the folded white panel with some of the Delft designs included in this worksheet.

Decorate on these areas of the white card only.



For further information
call the Education Team

01296 653262
www.waddesdon.org.uk



WADDES DON

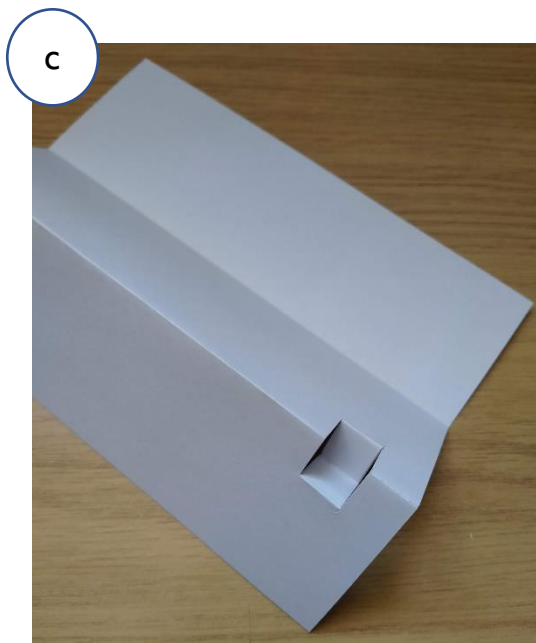
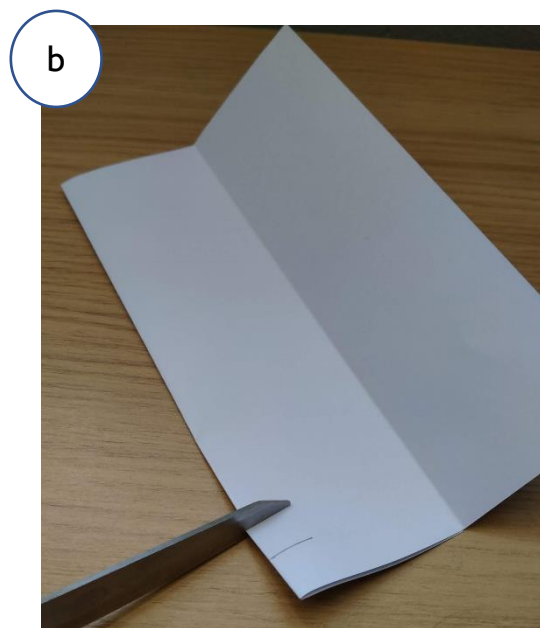
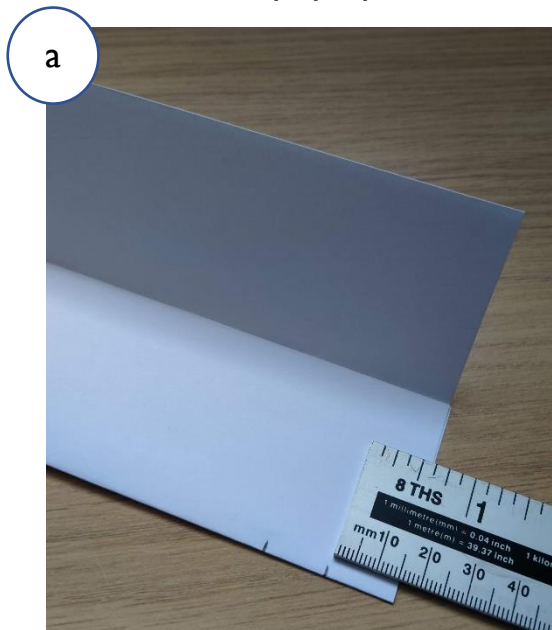


WADDES DON



Learning

6. About 1.5cm from the bottom of the valley fold in your white card, cut a 1.5cm tab with scissors. Reverse the fold of the 1.5cm tab as shown to create a pop-up on the other side of the card.



For further information
call the Education Team

01296 653262
www.waddesdon.org.uk



WADDES DON



WADDES DON



Learning

7. Using the tulip stencil, cut out two tulips in a colour of your choice. Stick them to the back of the left part of the pop-up tab to create a mini flower box.



For further information
call the Education Team

01296 653262
www.waddesdon.org.uk



WADDES DON

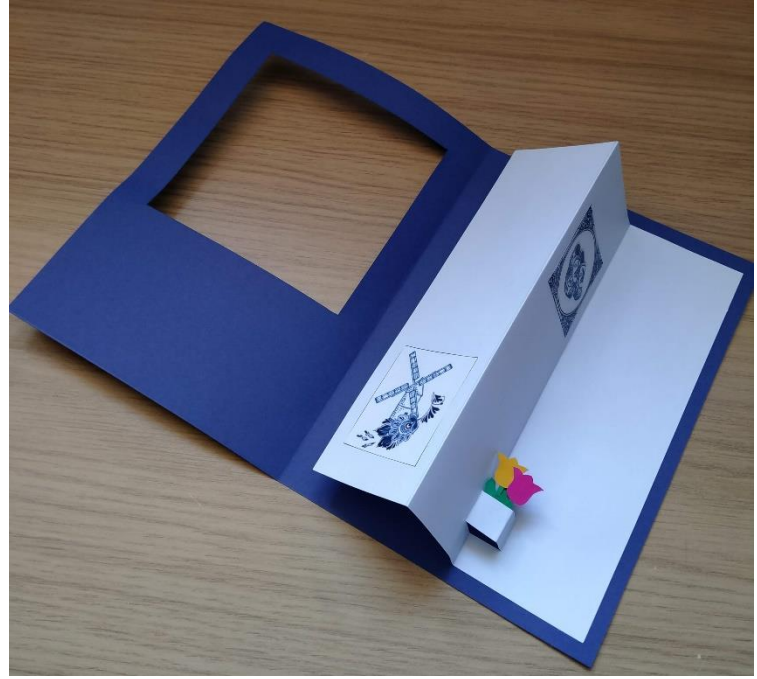


WADDES DON



Learning

- Using your glue, stick the right side of the white panel to the inside of the card base, as shown.



- Close the card. Add glue to the area of white card exposed through the window.



For further information
call the Education Team

01296 653262
www.waddesdon.org.uk



WADDES DON



WADDES DON



Learning

10. Place the square with the Delft design within the window, onto the glue, as demonstrated in the image.



11. Cut a 2.5cm x 10cm rectangle of white card. Write on this "Happy Easter" and stick this on the front of your card, below the window.



For further information
call the Education Team

01296 653262
www.waddesdon.org.uk



WADDES DON



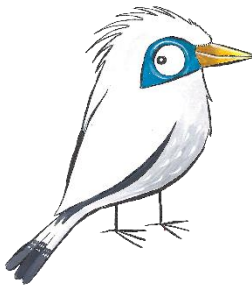
WADDES DON



Learning

12. Cut a short length of ribbon. Staple the ribbon to the non-glued side of the square with the Delft design. This makes sure that the person you give your card will know how to open it.

This bit can be tricky so you may need to ask an adult to help you.



13. Finish by writing a message inside. Your card is now complete, well done!



For further information
call the Education Team

01296 653262
www.waddesdon.org.uk



WADDES DON



WADDES DON



Learning

Delft designs for the square



For further information
call the Education Team

01296 653262
www.waddesdon.org.uk



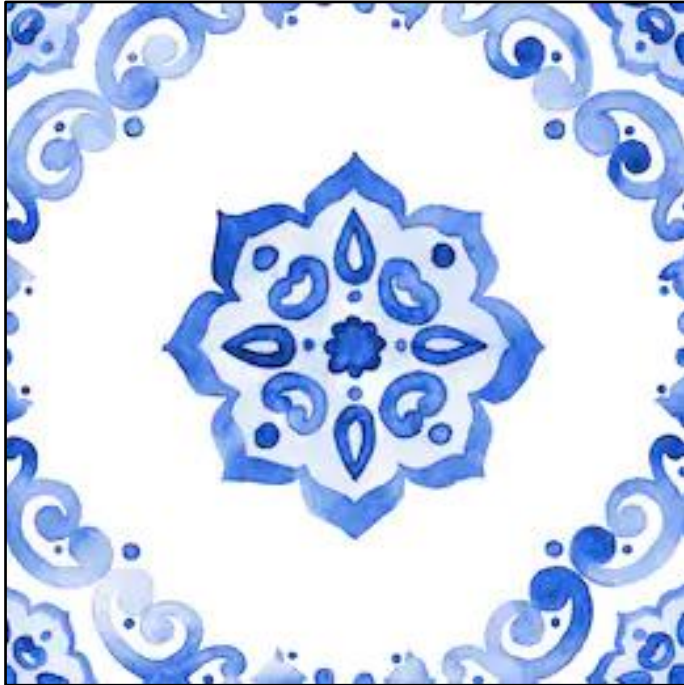
WADDES DON



WADDES DON



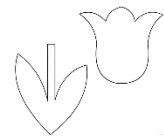
Learning



Delft designs to decorate the white panel



Tulip stencil



For further information
call the Education Team

01296 653262
www.waddesdon.org.uk



WADDES DON



WADDES DON



Learning

What is Delft?

Dutch Delfware or Delft Pottery is a term used for Dutch tin-glazed earthenware and is distinctive by its blue and white patterns.

The style originated around 1600 and the city of Delft in the Netherlands was the major centre of production.

All sorts of patterns can be depicted using the Delftware style. Often the blue and white design shows scenes of the Netherlands such as windmills or clogs, however, in the past the designs focused more on plants and flowers.

Here are some examples of Delftware:



For further information
call the Education Team

01296 653262
www.waddesdon.org.uk



WADDES DON